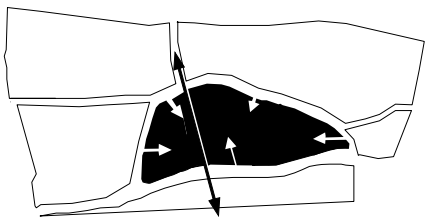
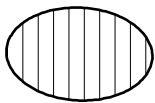


spider web pattern



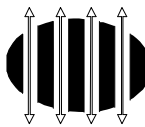
ingredients



identity

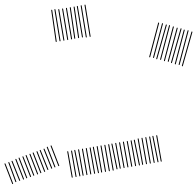


crust+cut

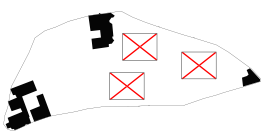


slices+ views

spider-web-pattern
the (former) spider-web pattern of sandy paths with radial streets around the historical town centre ("het ei") of Enschede formed an inspiration for the design.
ingredients:
different urban atmospheres and morphologies with their own qualities and values determine the situation. the park, the green villa neighbourhood, the centre and the new high-rise study projects. according to these elements an urban bicycle and pedestrian routing connects the park with the city centre.
identity:
the idea is to create a new additive structure having its own identity like an island.
crust + cut:
by cutting the extruded landscape vertically soft slices and a rough crust are created.
slices + views:
between the slices visual relations are formatted to intend communication.
existing patterns:
the existing urban patterns of the surroundings influence the form of the slices to create a positive interaction.
interweaving + demolishing buildings:
the two significant buildings at the corner and the functional school are preserved and form an triangle. all other buildings will be demolished.
open + intimacy space:
by modelling the soft slices horizontally, open and private space is created and reacts to its surroundings.
context:
the slices interpolate the tension between the green villa neighbourhood and the new four high raised up study projects.
modelling relations:
by lifting up the green layer along the molenstraat a new space is created where small offices and ateliers can be settled. this creates a positive effect to the urban interface.
green:
the folded up ground level is designed as a semi public park area. private terraces and patios are situated in the interior section.



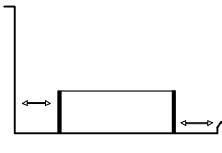
existing patterns



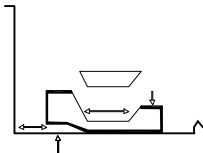
interweaving + demolishing buildings



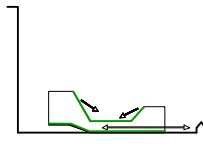
open and intimacy space



context



modelled relations



green





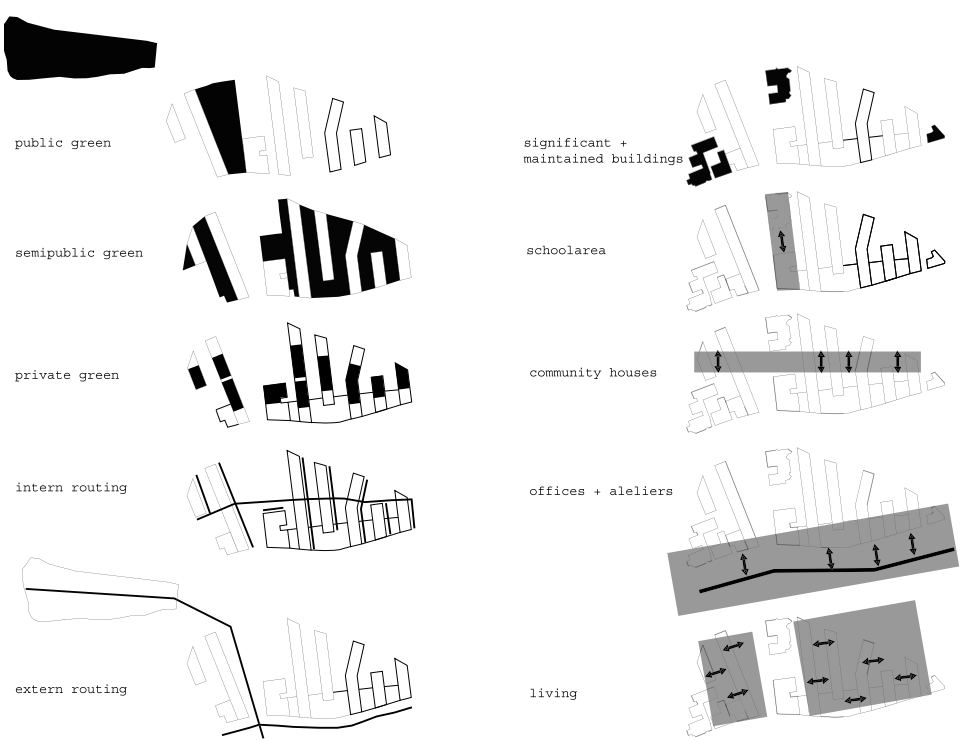
view from corner molenstraat /visserijstraat

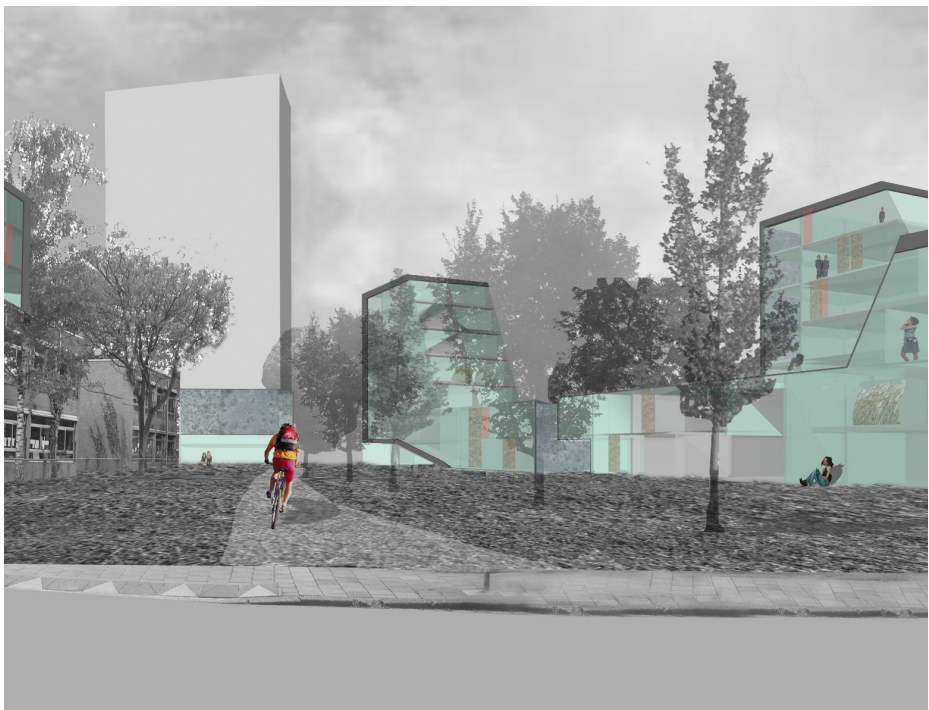


view from corner molenstraat /nieuwe schoolweg



urban morphology

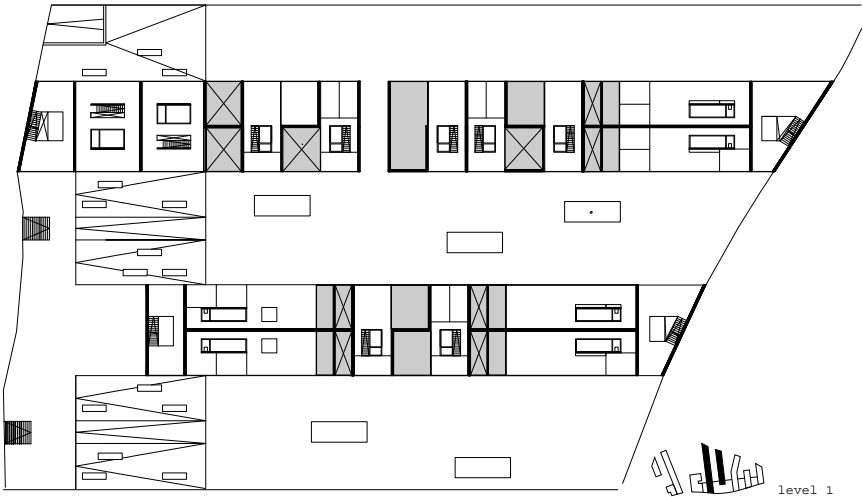
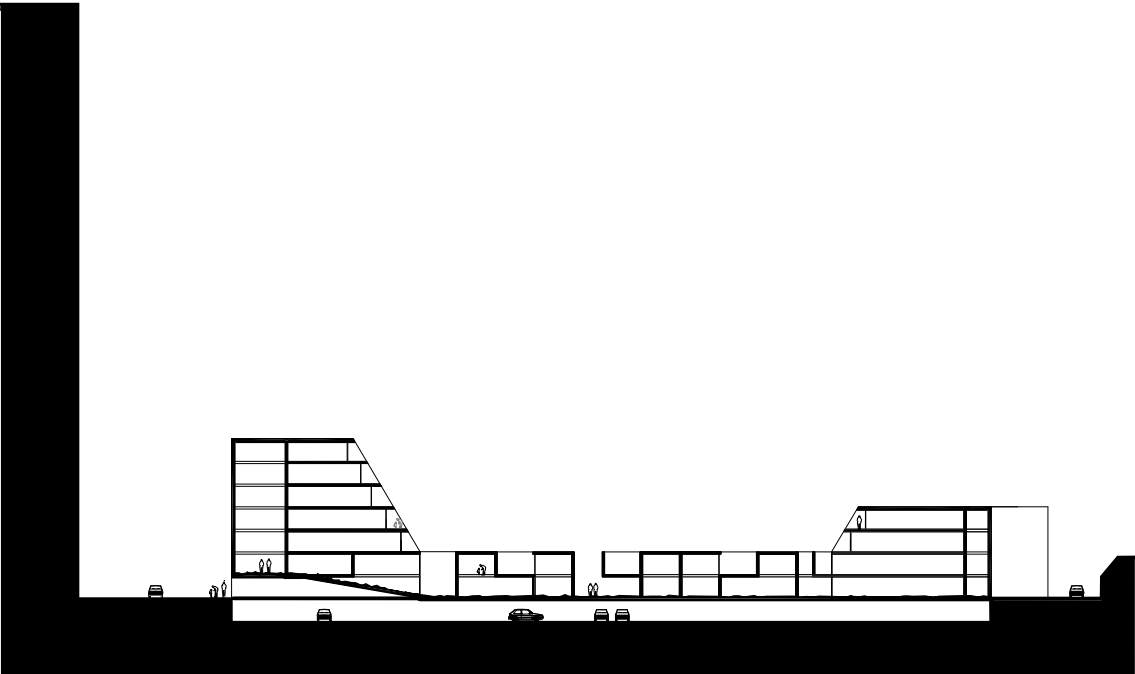




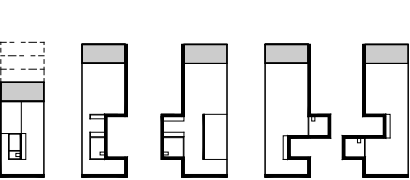
view from blijdensteinlaan



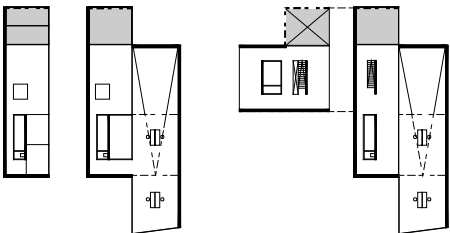
view of the greenarea between the buildings



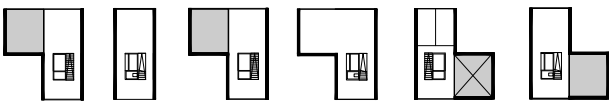
the shape of the building offers various typologies of housing.each of them has a private green terrace/patio. from the top to the ground floor of the edge of the buildings the appartements have different depths and flexible floorplans. the appartements on the ground floor can be combined with offices/ateliers,which are orientated to the molenstraat "the traffic circle". in the centre of the slices are the community and family houses situated as" maisonettes" with individual entrances and patios.they also can be combined to bigger units. a parking garage is on the underground level and connected with several staircases to the houses. voids in the landscape layer create visual relations between the garage and the green landscape area.



housing typology on upper levels



housing typology on ground level



housing typology as maisonette